

WeatherSure

SYSTEMS INCORPORATED

ROOFING • WATERPROOFING • SOLAR

Cherry Creek's Galleria building trusts WeatherSure Systems to deliver.

ROOFING

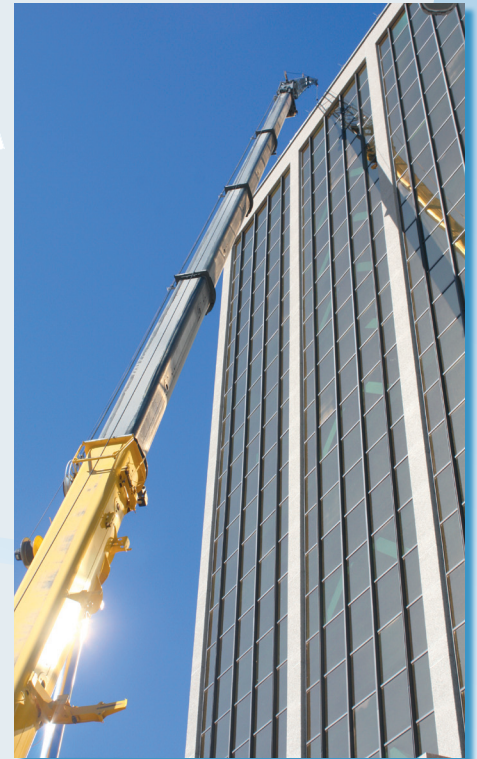
INSPECTION
LEAK REPAIRS
REPLACEMENTS
SINGLE PLY
BUILT - UP
MAINTENANCE

WATERPROOFING

CAULKING
SEALANTS
EXPANSION JOINTS
COATINGS
WINDOW GLAZING

When the time came for the reroofing of the Galleria, a landmark in the Cherry Creek area since the mid-70's, the building's owners and their roof consultant made an easy choice - select WeatherSure as the contractor for this challenging project, knowing that they could count on the WeatherSure team.

The roof consultant specified the DynaLastic® 250 FR "Cool Roof" System, a high performance modified bitumen from JM, offering an Energy Star® rated reflective white surface, combined with the inherent durability of the multi-ply modified bitumen system. The highly reflective membrane was installed using cold applied adhesives for maximum durability and minimal disruption to building operations.



DYNALASTIC® 250 FR "COOL ROOF" SYSTEM

